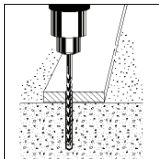
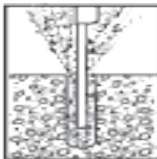


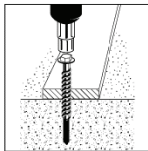
# Tapcon+ Screw Anchors



1



2



3

## Installation Steps for Concrete, Lightweight Concrete, and Metal Deck

- 1** Using a carbide drill bit, drill a hole at least 1/4" deeper than anchor embedment.
- 2** Clean hole with pressurized air or vacuum to remove any excess dust/debris.
- 3** Using an impact wrench or manual torque wrench, insert anchor into hole and tighten anchor until fully seated.

Anchor Size	ANSI Standard Drill Bit Diameter*	Anchor Head (Socket Size) Diameter	Washer Diameter	Max Installation Torque**	Max Torque Rating Impact Wrench	Min Anchor Embedment
1/4"	1/4"	3/8"	1/2"	20 ft lbs.	115 ft lbs.	2"
3/8"	3/8"	9/16"	13/16"	50 ft lbs.	200 ft lbs.	2 1/2"
1/2"	1/2"	3/4"	1"	70 ft lbs.	345 ft lbs.	2"

*Note - 1/4" diameter anchors require tight tolerance drill bit to ensure Category 1 performance. Use 1/4-7" Tapcon+ SDS drill bit, Part No. 3512909*

*\* A 1/4" Tapcon drill bit may also be used for installation of the 1/4" anchor.*

*\*\* For manual installation, use a torque wrench to verify that the maximum installation torque has not been exceeded.*

### **WARNING!**

Always wear safety glasses and other necessary protective devices or apparel when installing or working with anchors.

### **CAUTION:**

Do not reuse Tapcon+ Anchors for multiple attachments. Installing the anchor multiple times may result in excessive thread wear and decrease load capacity.

For a single attachment that requires realignment, anchor may be backed out and retightened with an impact wrench.

Oversized holes in the base material will reduce or eliminate the mechanical interlock of the threads with the base material and will reduce the anchor's load capacity.